

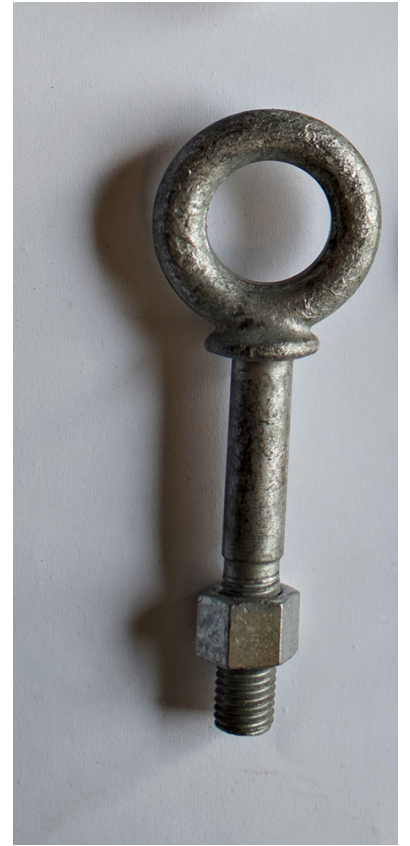
Shoulder Pattern Galvanized Eyebolt (Imported)

CATALOG (SKU) NUMBER: EYEBOLT IMP SHLDR

- Generally used as anchor points in rigging applications.
- Shouldered eye bolts can be used for either straight line or angular pulling in rigging applications, but are the preferred eye bolt for angular pulls since the shouldered design helps maintain the strength of the eye and the shank from bending or deforming. It's important to note that loading at an angle significantly reduces a bolt's rated capacity.
- Galvanized to ASTM A-153 specifications.
- Design factor is 5:1.
- Made of drop forged carbon steel.
- Other sizes, stainless steel, and domestic available upon request.



shldr



Galv eye bolt shoulder



150529_0324PacificIndustrial

Product Specifications

SHOULDER PATTERN GALVANIZED EYEBOLT (IMPORTED)												
PART NUMBER	SIZE (IN)	WORKING LOAD LIMIT (LBS)	WEIGHT EACH (LBS)	DIMENSIONS								
				A	B	C	D	E	F	G	H	I
IEB-41	1/4 X 2	650	0.066	0.25000	0.50000	0.88000	0.19001	1.50002	2.00002	2.94000	0.50000	0.47000
IEB-42	1/4 X 4	650	0.091	0.25000	0.50000	0.88000	0.19002	2.50004	4.00004	4.94000	0.50000	0.47000
IEB-43	5/16 X 2-1/4	1,200	0.125	0.31000	0.62001	1.12000	0.25001	1.50002	2.25003	3.50000	0.69000	0.56000
IEB-44	5/16 X 4-1/4	1,200	0.188	0.31000	0.62001	1.12000	0.25002	2.50004	2.25005	5.50000	0.69000	0.56000
IEB-45	3/8 X 2-1/2	1,550	0.214	0.38000	0.75001	1.38000	0.31001	1.50002	2.50003	3.97000	0.78000	0.66000
IEB-46	3/8 X 4-1/2	1,550	0.253	0.38000	0.75001	1.38000	0.31002	2.50004	4.50005	5.97000	0.78000	0.66000
IEB-47	1/2 X 3-1/4	2,600	0.426	0.50001	1.00001	1.75000	0.38001	1.50003	3.25005	5.12001	1.00000	0.91000
IEB-48	1/2 X 6	2,600	0.568	0.50001	1.00001	1.75000	0.38003	3.00006	6.00007	7.88001	1.00000	0.91000
IEB-49	5/8 X 4	5,200	0.686	0.62001	1.25002	2.25000	0.50002	2.00004	4.00006	6.44001	1.31001	1.12000
IEB-50	5/8 X 6	5,200	1.025	0.62001	1.25002	2.25000	0.50003	3.00006	6.00008	8.44001	1.31001	1.12000
IEB-51	3/4 X 4-1/2	7,200	1.445	0.75001	1.50002	2.75000	0.62002	2.00004	4.50007	7.44001	1.56001	1.38000
IEB-52	3/4 X 6	7,200	1.675	0.75001	1.50002	2.75000	0.62003	3.00006	6.00008	8.94001	1.56001	1.38000
IEB-53	7/8 X 5	10,600	2.250	0.88001	1.75003	3.25000	0.75002	2.50005	5.00008	8.46001	1.84001	1.56000
IEB-54	1 X 6	13,300	3.663	1.00002	2.00003	3.75000	0.88003	3.00006	6.00009	9.97002	2.09001	1.81000

SHOULDER PATTERN GALVANIZED EYEBOLT (IMPORTED)												
IEB-55	1 X 9	13,300	4.225	1.0000	2.0000	3.7500	0.8800	4.0000	9.0000	2.9700	2.0900	1.8100
IEB-56	1-1/4 X 8	21,000	6.500	1.2500	2.5000	4.500	1.0000	4.0000	8.0000	2.7200	2.4700	2.2800