

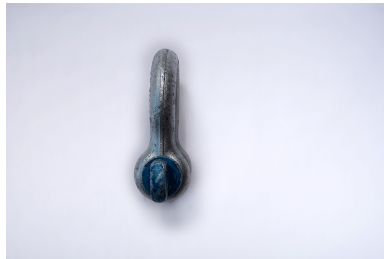
Galvanized Screw Pin Anchor Shackle

CATALOG (SKU) NUMBER: I506/CT-541

- Standard material for shackle bodies is drop-forged carbon steel. Alloy shackles available upon request. Alloy shackles have higher working load limit.
- Pins are heat treated and made of alloy steel and galvanized to meet ASTM A-153 specifications.
- Statistically tested for impact resistance, tensile strength, hardness, ductility and fatigue.
- Meet the design requirements of federal specification RR-C-271, Type IVA, Class 2.
- Design factor is 5:1.
- All U.S.A. shackles meet or exceed all manufacturing requirements of ASME B30.26.



Screw Pin Anchor Shackle C
(dimension)



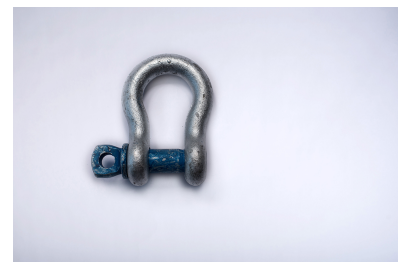
Screw Pin Anchor Shackle A
(side)



Screw Pin Anchor Shackle A



Screw Pin Anchor Shackle
DimMap



Screw Pin Anchor Shackle B



Screw Pin Anchor Shackle D
(Dimension)



Screw Pin Anchor Shackle
DimMap side

Product Specifications

GALVANIZED SCREW PIN ANCHOR SHACKLE (S.P.A.S)												
SIZE (IN)	IMPORT PART NUMBER	DOMESTIC PART NUMBER	WORKING LOAD LIMIT (TONS)	WEIGHT (LBS)	DIMENSIONS (IN)						TOLERANCE (LENGTH +/-)	TOLERANCE (WIDTH +/-)
					A	B	C	D	E	F		
3/16	I50620	CT-5410335	1/3	0.06	0.1875	0.2375	0.8875	0.3725	0.6830	0.567	0.0625	0.0625
1/4	I50625	CT-5410435	1/2	0.1	0.250	0.3125	1.125	0.4680	0.7810	0.6875	0.0625	0.0625
5/16	I50630	CT-5410535	3/4	0.18	0.3125	0.375	1.250	0.5310	0.8430	0.75	0.0625	0.0625
3/8	I50635	CT-5410635	1	0.31	0.375	0.4375	1.4375	0.6560	0.9680	0.9375	0.125	0.0625
7/16	I50640	CT-5410735	1-1/2	0.38	0.4375	0.5	1.750	0.7180	1.1560	1.125	0.125	0.0625
1/2	I50645	CT-5410835	2	0.72	0.5	0.625	1.9375	0.8125	1.25	1.25	0.125	0.0625
5/8	I50650	CT-5411035	3-1/4	1.37	0.625	0.75	2.4375	1.0625	1.5625	1.4375	0.125	0.0625
3/4	I50655	CT-5411235	4-3/4	2.35	0.75	0.875	2.8215	1.25	1.8125	1.75	0.25	0.0625
7/8	I50660	CT-5411435	6-1/2	3.62	0.875	1	3.125	1.4375	2.0625	2	0.25	0.0625
1	I50665	CT-5411635	8-1/2	5.03	1	1.125	3.75	1.6875	2.5	2.375	0.25	0.0625

GALVANIZED SCREW PIN ANCHOR SHACKLE (S.P.A.S)												
1-1/8	I50670	CT-5411835	9-1/2	7.41	1.125	1.25	4.25	1.8125	2.9375	2.625	0.25	0.0625
1-1/4	I50675	CT-5412035	12	9.5	1.25	1.375	4.5	2	3.25	3	0.25	0.0625
1-3/8	I50680	CT-5412235	13-1/2	13.53	1.375	1.5	5.25	2.25	3.5	3.25	0.25	0.125
1-1/2	I50685	CT-5412435	17	17.2	1.5	1.625	5.75	2.375	3.875	3.5	0.25	0.125
1-3/4	I50690	CT-5412835	25	27.78	1.75	2	7	2.875	4.75	4	0.25	0.125
2	I50695	CT-5413235	35	45	2	2.25	7.75	3.25	5.75	4.875	0.5	0.125
2-1/4	I50700	-	40	67	2.25	2.75	10.5625	4.125	7.25	5.5	0.5	0.125